

IP PTZ SERIES

If you're monitoring large areas such as parking lots, industrial sites, or convention centers, Provision-ISR PTZ cameras allow you to monitor the overall area and focus on suspicious activity.



Z5-25IPE-4(IR)

5" AI IP PTZ

The Z5-25IPE-4(IR) AI IP PTZ offers impressive video quality and features. The Z5 provides full connectivity options and fast motor speed while keeping a sleek design. It can be installed almost anywhere with the optional accessories and provide full compatibility with Provision-ISR's platforms (Ossia NVRs, Ossia VMS, Provision Cam2 Mobile App.)

DDA™
VIDEO ANALYTICS

AUTO
TRACKING



MAIN FEATURES

- DDA™ Analytics with Auto-Tracking
- Face Recognition Analytics
- Smart IR Distance: 150m
- Preset speed of 120°/Sec (max)
- Preset accuracy up to 0.1°
- Endless 360° Pan Rotation
- 180° Continuous Tilt with Auto Flip
- H.265 Video Compression
- 300 Preset Position
- 4 Pattern, Scan Route, and 8 Cruise Lanes
- Park Action
- Power-Off Memory
- Fully functional web-client
- 3D-DNR Noise Reduction
- IP66 Water-proof and Dust-proof
- Audio In/Out
- Alarm In/Out
- SD Card Support
- PoE+

IP TECHNOLOGY
SMART SOLUTIONS THROUGH THE NETWORK



Z5-25IPE-4(IR)

SPECIFICATIONS

Video	Image Sensor	1/2.5" CMOS
	Effective Pixels	2560×1440
	Sync System	Progressive Scan
	Electronic Shutter	1/25~1/100,000s
	Day & Night	ICR
	Min. Illumination	Color: 0.01Lux@(F1.65, AGC on), B/W: 0.002Lux@(F1.65, AGC on), 0Lux with IR
Audio	Audio Compression	G.711A/G.711U
	Communication	2-Way Audio
Camera Lens	Optical Zoom	x25
	Digital Zoom	x16
	Focal Length	4.8mm (F1.65) - 120mm (F3.8)
	Aperture Range	F1.65 ~ F3.8
	Focus	Auto/Manual
	Minimum Focus Distance	1M~15M
	Horizontal Angle of View	55°(wide) ~ 2.4°(tele)
Image Enhancement	Image Settings	AWB Adjustable Exposure Mode Sharpness, Saturation, Brightness & Contrast Adjustable Auto Gain Adjustable
	BLC/HLC	Yes
	WDR Range	DWDR
	EIS	N/A
	Defog	Yes
	Noise Reduction	3D-DNR
	Image Orientation	Mirror/Flip
	Privacy Zone	Up to 4 square masks
Motion Detection	Yes	

SPECIFICATIONS

Compression	Video Compression	H.264/H.265/MJPEG
	Resolutions and Streams	Main stream: 2560×1440(4MP),2304x1296 (3MP), 1920x1080 (1080P), 280x720 (720P) Substream: 1280x720 (720P), 704x576 (D1), 352x288 (CIF) Third stream: 704x576 (D1), 480x240, 352x288 (CIF)
	FPS	1-25/30FPS
	Bit-Rate	1536Kbps ~ 7192Kbps@H.265 / 2048Kbps ~ 8192Kbps@H.264
	Encode Mode	VBR/CBR
	Image Quality	Five levels under VBR; Free adjustment under CBR
AI Features	Analytics	AI: DDA™ Sterile Area, DDA™ Line Crossing, DDA™ Object Counting, Face Recognition General: Camera Tampering
	Smart Tracking	Auto Tracking based on DDA™ (Human / Vehicle)
	Face Recognition	Up to 10 face detections and 3 face recognitions per second
	Face Database	Up to 10000 faces
Network	Interface	1 RJ45 10M/100M Adaptive Ethernet (Support PoE 802.3.at)
	User Access	Supports simultaneous monitoring of up to 6 users with multi-stream real-time transmission
	Network Protocols	HTTP, HTTPS, IPv4/IPv6, 802.1x, QoS, FTP, SMTP, UPnP, SNMP,DNS, DDNS, NTP, RTSP, RTCP, RTP, TCP/IP,UDP, IGMP, ICMP,DHCP, PPPoE
	ONVIF	Yes
	Remote Monitoring	Provision Cam2 Mobile App, Ossia VMS, IE Browsing
PTZ Features	Pan Range	360° (Endless)
	Tilt Range	-3°~183° (With Auto Flip)
	Pan Speed	Manual: 0.1~80°/s; Preset speed: 80°/s
	Tilt Speed	Manual: 0.1~120°/s; Preset speed:120°/s
	Presets	300
	Patterns	4 Tracks. Up to 3 minutes each
	Cruise	8 cruises (16 presets per cruise)
	Scan	Standard / Random (with left and right boundary)
	Power Off Memory	Yes
	Park Action	Preset/Cruise/Pattern/Auto Scan/Random Scan
	Schedule	Up to 8 tasks (Preset/Cruise/Pattern/Auto Scan/Random Scan)
3D Control	Supported (Via Provision-ISR Devices)	

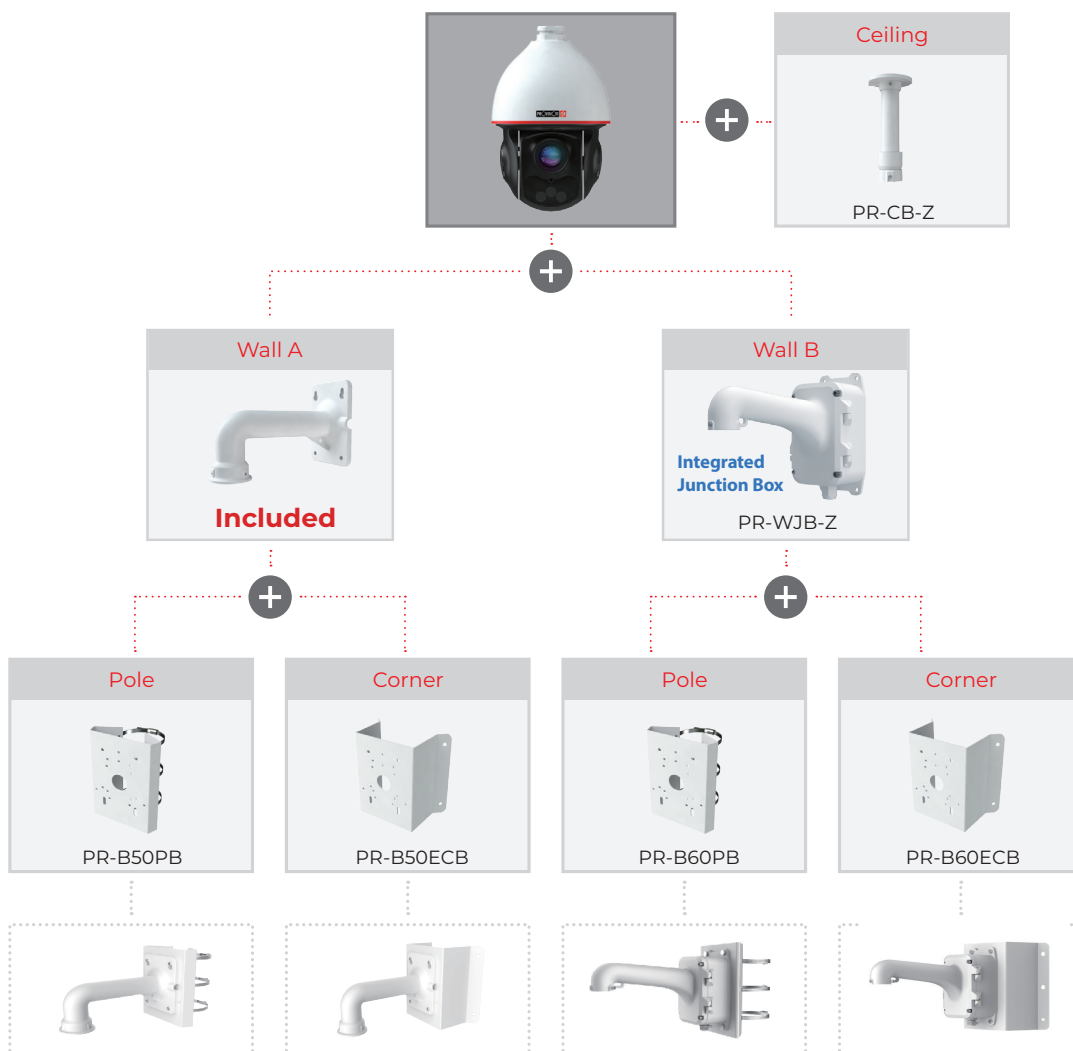
SPECIFICATIONS

	IR Distance	150m
	Smart IR	Yes
	Protection Rate	IP66
	Fan & Heater	Yes
	Dimensions	Φ 209mm × 328mm
	Weight(Gross)	~3.7Kg
	Network	RJ45
Housing	Analog Video Output	No
	Audio Connectivity	1Ch Input + 1Ch Output
	SD Card	Yes (microSD/SDHC/SDXC. Up to 256GB)
	RS-485	No
	Alarm In	1 Dry Contact
	Alarm Out	1 Dry Contact
	Power Supply	PoE+ (802.3at) / DC24V/3A / AC24V/3A (Not included)
	Power Consumption	Max 30W (With IR, Heater and Fan working)
	Work Environment	-30°C~50°C, 10%~90% Humidity (Cold start at - 20°C)
	Optional Brackets	PR-WJB-Z Wall Bracket with Junction Box PR-CB-Z Ceiling Bracket PR-B50PB Pole Adapter PR-B50ECB External Corner Adapter

Z5-25IPE-4(IR)

SPECIFICATIONS

For PTZ-Z5



Z5-25IPE-4(IR)

SPECIFICATIONS

